



TYPE: GE-T 19A-24B "GIFLEX" COUPLING

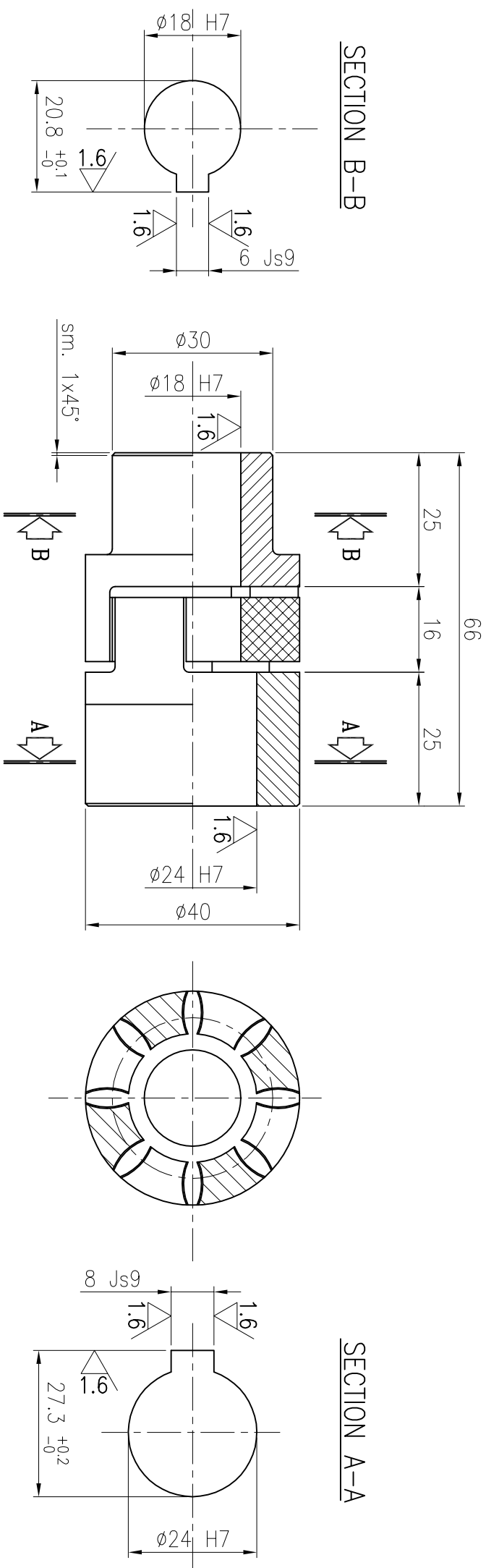
FOR N°1 CRANE MANUFACTURE N°1 PIECE

DATA	MODIFICA ESEGUITA O MOTIVO DELLA SOSTITUZ.							DIS.	APP.
DATE	MODIFICATION EXECUTED OR REASON OF THE REPLACEMENT							DRAWER	
Fabb. di riferimento N. Ref. material list 12834-5750	Materiale Material STEEL	Treatment Treatment	Toll. gen. lav. Mach tolerance H11-d11	Mod. o stampo Type	Peso Weight 0.5	Scala Scale 1:1			

1.6

 	ROKAS CONSTRUCTIONS S.A. <small>TEL +30-2108774100 FAX +30-2108774121 or 111</small> WWW.ROKASGROUP.GR		Customer: PIRAEUS PORT AUTHORITY	
	Object: N.8 RMG 40t		DIS DREAMER	G/M
	Project: F0010	VER.	DB	DATA DATE
		APP.	RM	18/02/09
	Dis. di riferimento N.	12834-5757		Pos. 6
FLEXIBLE COUPLING	Comm. /Job			1/1
N. 18033	Disegno / Drawing	N. 12834-5757		

Formato: A3



TYPE: GE-T 19A-24B "GIFLEX" COUPLING

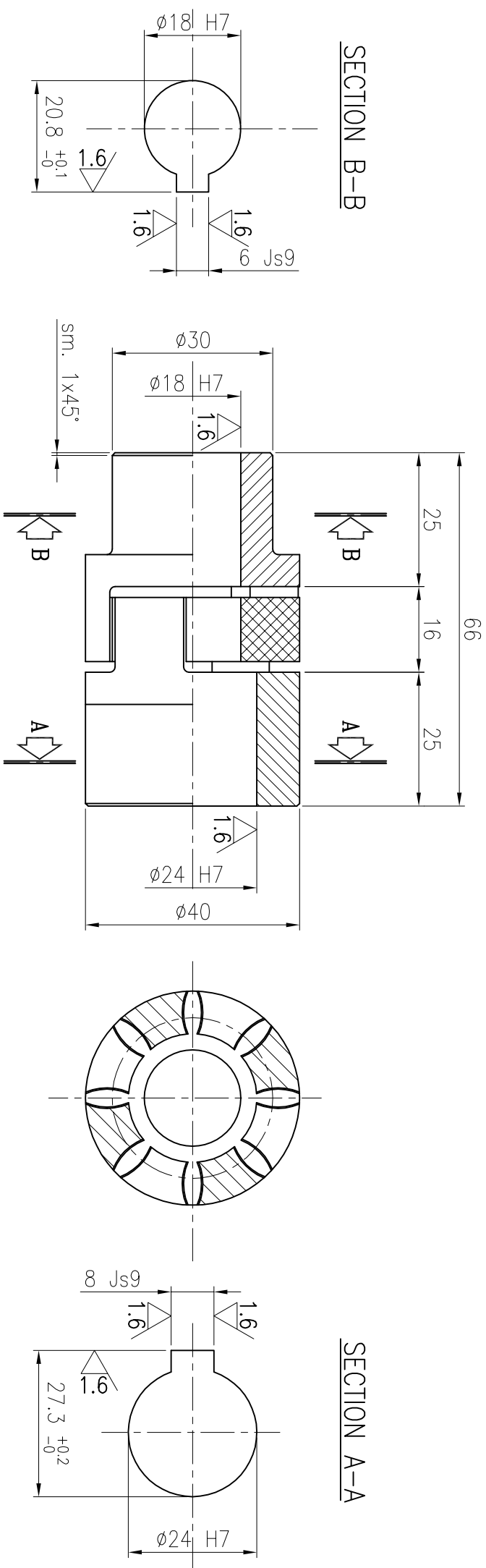
FOR N°1 CRANE MANUFACTURE N°1 PIECE

[illegible]

1.6

[illegible]

Formato: A3



TYPE: GE-T 19A-24B "GIFLEX" COUPLING

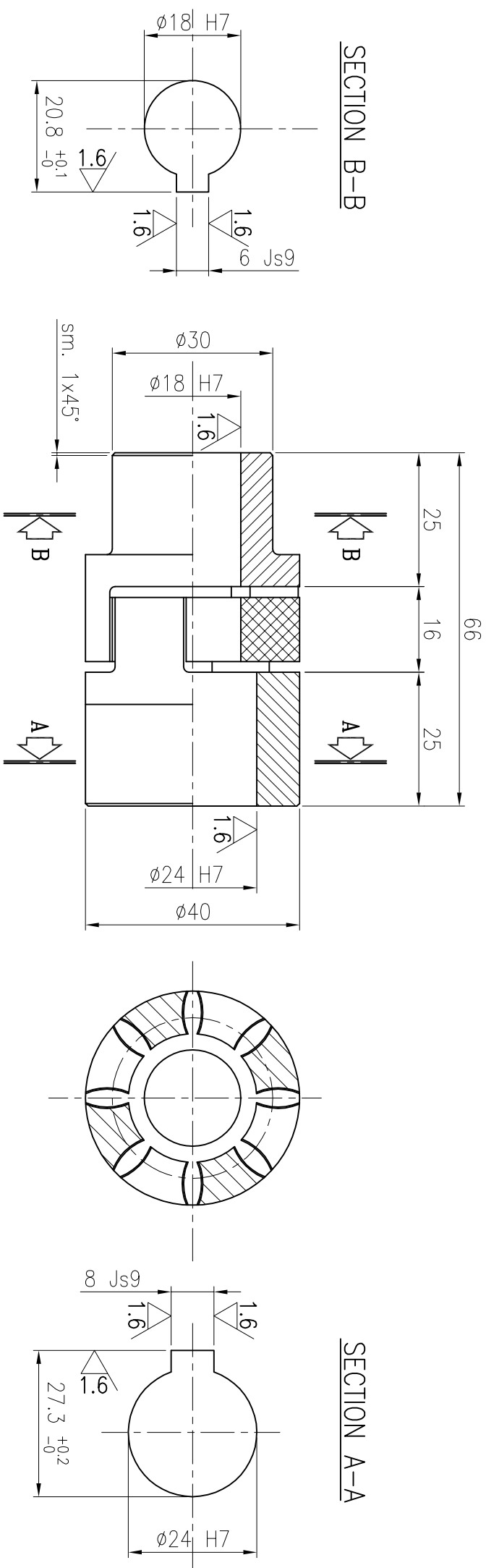
FOR N°1 CRANE MANUFACTURE N°1 PIECE

DATA	MODIFICA ESEGUITA O MOTIVO DELLA SOSTITUZ.						DIS.	APP.
DATE	MODIFICATION EXECUTED OR REASON OF THE REPLACEMENT						DRAWER	
Fabb. di riferimento N. Ref. material list 12834-5750	Materiale Material STEEL	Treatment Treatment	Toll. gen. lav. Mach tolerance H11-d11	Mod. o stampo Type	Peso Weight Kg 0.5	Scala Scale 1:1		

1.6

<div><div><div>MGM</div><div>OMG</div></div></div>		<div>ROKAS</div> <div>CONSTRUCTIONS S.A.</div> <div>TEL +30-2108774100 FAX +30-2108774121 or 111 WWW.ROKASCONP.RU.GR</div>				Customer: PIRAEUS PORT AUTHORITY		DIS DREAMER		GM	
		Object: N.8 RMG 40t		VER.		DB		DATA DATE			
		Project: F0010		APP.		RM		18/02/09			
		Dis. di riferimento N.		12834-5757		Pos.		6			
FLEXIBLE COUPLING		Comm. /Job		Disegno / Drawing		1/1					
		N. 18033		N. 12834-5757							

Formato: A3



TYPE: GE-T 19A-24B "GIFLEX" COUPLING

FOR N°1 CRANE MANUFACTURE N°1 PIECE

DATA	MODIFICA ESEGUITA O MOTIVO DELLA SOSTITUZ.						DIS.	APP.
DATE	MODIFICATION EXECUTED OR REASON OF THE REPLACEMENT						DRAWER	
Fabb. di riferimento N. Ref. material list 12834-5750	Materiale Material STEEL	Treatment Treatment	Toll. gen. lav. Mach tolerance H11-d11	Mod. o stampo Type	Peso Weight 0.5	Scala Scale 1:1		

1.6

[illegible]

Formato: A3